

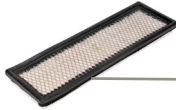
FILTER OVERVIEW WITH SERVICE INTERVALS AND CAPACITIES

5EN Series – 5083EN, 5093EN and 5101EN

CAB

RECIRCULATION FILTER – [AL177184](#)

Clean every 300 hours and as required per conditions.



HYDRAULIC FILTER – [RE197065](#)

Change after the first 100 hours and then every 600 hours.

(Click here for [capacity](#))



TRANSMISSION

OIL FILTER – [SJ10672](#)

Replace after first 100 hours then after every 500 hours.



ENGINE OIL FILTER

OIL FILTER – [RE504836](#)

Change after first 100 hours and then every 300 hours, or annually.

If using John Deere Plus-50 15-40W you can extend drain intervals to 500 hours.

(Click here for [capacity](#))



ENGINE

PRIMARY FUEL FILTER – [RE522868](#), [AE29052](#)

FINAL FUEL FILTER – [RE62419](#)

Replace Fuel Filter every 500 hours.



ENGINE

PRIMARY AIR FILTER

(- 370000) – [KV16429](#)

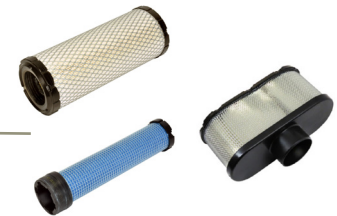
(370000 -) – [RE253518](#)

SECONDARY AIR FILTER

(- 370000) – [AT171854](#)

(370000 -) – [RE253519](#)

Service filter annually or as required per conditions.



JOHN DEERE

Genuine Parts and Service

http://www.deere.com/en_US/parts/servicessupport/filteroverviews.html

CAPACITIES

5EN Series – 5083EN, 5093EN and 5101EN

CAPACITIES (Approximate):

Fuel Tank:

5EN Tractors..... 72 L (19 gal)

Cooling System:

5EN Tractors..... 11.4 L (3 gal)

Crankcase with Filter:

5EN Tractors..... 8.5 L (2.24 gal)

Transmission and Hydraulic System:

12/12 PowrReverser..... 43.5 L (11.5 gal)

24/24 PowrReverser..... 45.4 L (12 gal)

Mechanical Front Wheel Drive (MFWD) Axle:

Differential Housing 5.0 L (1.32 gal)

Wheel Hub (Each) 0.5 L (0.13 gal)

[Return to Filter Overview](#)

